



INSTALLATION

RELEASE 2020



passion for sports grounds

INSTALLATION OF ARTIFICIAL TURF



CONTENTS

SandMatic		
B2005	Ride-on machine for the filling of artificial turf. Capacity 1,500 kg; working width 1,400 mm	P. 04
B1005D	Ride-on machine for the filling of artificial turf. Capacity 800 kg; working width 1,000 mm	P. 04
B1505RC/ECO	Self-propelled, radio-controlled machine for the filling of artificial turf. Capacity 1,500 kg; working width 1,400 mm	P. 06
Spreader		
BS800	Ground driven spreader for artificial turf.	P. 08
HS800	Manual topdresser for artificial turf. Capacity 200 kg; working width 800 mm	P. 08
SP1000	Ground driven tractor device for the topdressing of artificial turf. Capacity 500 kg; working width 1,000 mm	P. 09
Oscillating brush		
OS1700	Brushing attachment for filling material, intensive erecting and sweeping of artificial turf fibres. Working width 1.700 mm	P. 10
TurfGuard		
TG2	One-axle for the filling, maintenance and expansion of artificial grass.	P. 12
Tools and devices		
For the installation of artificial turf.		P. 14

SandMatic

B2005



Ride-on machine for the filling of artificial turf.
Capacity 1,500 kg; working width 1,400 mm

The self-driven SandMatic B2005 spreads and infills artificial turf surfaces with sand, rubber and organic infill material using its innovative brush technology and conveyor belt. The SandMatic-Series enables precise infilling of sand from 2.5 to 40 kg/m² and rubber from 0.5 to 15 kg/m² in both directions. With a working width of 1,400 mm and driving speeds from 1 m/min up to 25 m/min the SandMatic B2005 achieves an area performance of up to 35 m²/min.

The control panel can be moved from left to right, thereby maximizing overview and ergonomics. The machine is driven hydraulically by a 16.1 kW (21.9 HP) 3-cylinder Kubota diesel engine. The weight is evenly distributed to 8 large dimensioned low pressure tires. Thus, the area pressure of the gross weight of the machine is adjusted to the turfs permissible ground pressure.

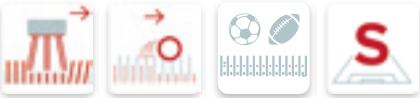
Art.-No. 6218862

Spreading width	1,400 mm
Max. filling weight	1,500 kg
Spreading performance	Sand 2.5 - 40 kg/m² / Rubber 0.5 to 15 kg/m²
Drive	3-cylinder Kubota diesel engine, water-cooled / 12 kW (16 PS)
Weight	1,650 kg
Dimensions	L 3.420 x W 1.800 x H 2.100 mm

Subject to technical alterations

SandMatic

B1005D



Ride-on machine for the filling of artificial turf.
Capacity 800 kg; working width 1,000 mm

SandMatic B1005D is a compact automatic and self-driven infilling machine that provides exact dosage of sand and rubber into modern artificial turf surfaces. The efficiency of the machine is considerable – with an infilling power between 1 and 10 m²/min.

The working width is 1,000 mm. The machine is driven by a 3-cylinder diesel engine with a performance of 16 HP. A comfortable driver seat with adjustable seat position (left/right) guarantees clear view for working and ergonomic operation.

Art.-No. 6213089

Spreading width	1,000 mm
Max. filling weight	800 kg
Spreading performance	2,5 - 40 kg/m²
Drive	3-cylinder Kubota diesel engine, water-cooled / 14.9 kW (20.3 PS)
Weight	960 kg
Dimensions	L 3.300 x W 1.400 x H 1.300 mm

Subject to technical alterations



B2005

B1005D

SandMatic

B1505RC/ECO

Self-propelled, radio-controlled/handsteering machine for the filling of artificial turf.
Capacity 1,500 kg; working width 1,400 mm

The SandMatic B1505 fully meets the special demands placed on it by ultra-modern artificial turf surfaces and even when the pile is extremely high the prescribed amounts of sand or granulate will be exactly distributed and worked into the system. A slide valve enables the quantity of material strewn to be constantly variable with sand from 2.5 - 40 kg/m² and rubber from 0.5 to 15 kg/m².

Driving speeds from 1 m/min to 15 m/min make the machine flexible in use. With the working width of 1.4 metres, theoretical performance of the machine ranges from 1.5 to 22.5 m²/min. The machine is driven by a 3-cylinder Kubota diesel engine with integrated hydraulic cooling system with a performance of 16.1 kW (22 HP). All functions can be controlled by hand. This makes the operation method more convenient and expedites the working process. The machine can be also controlled manually by means of the operating panel.

The weight of the machine is supported by 8 air-filled, low pressure tires. That way, the machine, when filled, conforms to the permitted ground pressure for the synthetic surface. The four pairs of wheels can be pivoted through 120°, which makes it extremely easy to manoeuvre.

Art.-No. 6400103

Spreading width	1,400 mm
Max. filling weight	1,500 kg
Spreading performance	Sand 2.5 - 40 kg/m ² / Rubber 0.5 to 15 kg/m ²
Drive	3-cylinder Kubota diesel engine / 16.1 kW (22 HP)
Weight	1,300 kg
Dimensions	L 1.800 x W 2.720 x H 1.970 mm

Subject to technical alterations



COMFORTABLE.

Radio frequency (RF) remote control for handling all functions, with a range of 100 m (B1505RC).



B1505 ECO.

Cabel handsteering for controlling the infilling process and driving direction. Range up to 5 m (B1505 ECO).



PRECISE.

Manual outlet lever for precisely adjusting the infill quantity.



Manual Spreader

HS800



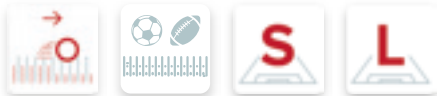
Manual topdresser for artificial turf.
Capacity 200 kg; working width 800 mm

Manual spreader HS800 applies filling material to artificial turf. A sliding valve controls the amount of filling material. The top-dressing process begins as soon as the front wheels come into contact with the ground. If top-dressing did not take place, the HS800 is tilt back with the drawbar and manoeuvred on the rear wheels.



BeltSpreader

BS800



Ground driven spreader for artificial turf
Capacity 200 kg; working width 800 mm

The ground driven pull behind spreader BS800 applies dry and wet infill materials to artificial turf. The output of the infill material is adjusted by the sliding valve. The applying begins with the lowering of the container and occurs by the belt. The BS800 can be operated by various vehicles with more then 10 HP.



Spreader

SP1000



Ground driven tractor device for the topdressing of artificial turf.
Capacity 500 kg; working width 1,000 mm

SP1000 spreader top-dresses filling material on artificial turf. To transport the tractor raise SP1000 with the three-point hitch. For spreading the infill, the spreader is lowered and the output amounts are adjusted by the sliding valve.



HS800



BS800



SP1000

	HS800	BS800	SP1000
Article Number	6400134	6221306	6400051
Working width	800 mm	800 mm	1,000 mm
Max. filling weight	200 kg	200 kg	500 kg
Drive	manual	mechanical	mechanical
Weight	100 kg	170 kg	170 kg
Dimensions	L 1,220 x W 1,044 x H 826 mm	L 1,850 x W 1,030 x H 1,600 mm	L 1,000 x W 1,380 x H 1,010 mm

Subject to technical alterations

Oscillating brush

OS1700

Brushing attachment for filling material, intensive erecting and sweeping of artificial turf fibres.
Working width 1,700 mm.

The oscillating brush OS1700/OS1700 PTO attachment is designed to straighten up the fibre and brushes the infill material into the artificial turf system. The oscillating movement of the brush unit allows multi directional work. The SandMatic, which is equipped with the very same oscillating brush feature, has been used for this purpose for years; it enables work "against" and "with" the pile. 4 adjustment spindles are used to precisely adjust the working depth in accordance with the pile height. The OS1700/OS1700 PTO attachment provides fibre support by distributing the infill material homogeneously throughout the artificial turf surface.

The OS1700/OS1700 PTO attachment can be used with brushes of different hardness/stiffness to loosen the infill material or to decompact the artificial turf surface (e.g.: when sand is used). This attachment can also be used as a sweeping brush for the maintenance of the artificial turf surface just by switching off the oscillating movement of the brushes. The working width is 1,700 mm.

Art.-No. 6212168 (hydraulic) / Art.-No. 6211848 (PTO)

Working width	approx. 1,700 mm
Drive	OS1700: Hydraulically, flow rate minimum 30 litres at 100 bar/min OS1700 PTO: PTO shaft, 540 rpm
Weight	190 kg
Dimensions	L 1,700 x W 900 x H 800 mm

Subject to technical alterations



FLEXIBLE.
Different hardness/stiffness brushes available for all kinds of requirements, easy to change.



HYDRAULICS.
OS1700 with 3-point rear attachment system, hydraulic drive.



PTO ADAPTOR.
OS1700PTO with 3-point rear attachment system, drive via PTO shaft.



TurfGuard

TG2

One-axe for the filling, maintenance and expansion of artificial grass.

The TurfGuard TG2 with its various attachments installs and maintains filled artificial lawns. The TG2 is powered by a powerful 8.0 kW (10.9 PS) gasoline engine.

The TurfGuard TG2 has a 1-hand control for stepless forward and reverse travel. At the same time, the TG2 can be steered in a narrow space with the swivel, swivel handle during slow travel. As the vehicle travels, the steering stabilizes, resulting in a better straight-ahead travel.

The TG2 has a total of 5 connections and a return line. 2 connections have a speed-dependent oil quantity, e.g. A spreading roller or a brush, which is dependent on the driving speed. For additional 3 connections, the operator can use additional functions, different attachments. The valve levers can also be fixed in the front or rear position, e.g. For a freezer brush, snowmachine.

Its compact dimensions, the tight turning circle and the large number of connections make the TG2 the perfect helper on small playing fields, Tennis, paddle tennis or futsal.

Art.-No. 6223514

Traction drive	Hydrostatic drive
	forward / backward - left / right
Motor output	1-cylinder gasoline engine / 8 kW (10,9 PS)
Hydraulics	Attachment - Supply 100 bar - 16 l / min
	3 Free connections
	2 cable connections
	1 Separate return line
Weight	260 kg
Dimensions	L 1,223 x W 765 x H 1,116 mm

Subject to technical alterations



TurfGuard

TG2 OPTIONAL ATTACHMENTS



OS1100

Oscillation brush OS1100 to brush sand/rubber/organic infilling material into artificial grass.

Art.-No. 6217216



TurfSaw TS350

Cutting machine for artificial turf with or without infill material.

Art.-No. 6213938



OSS1100 Spreading unit

Optional OSS Spreading unit to spread sand/rubber/organic infilling material into artificial grass.

Art.-No. 6216180



RotoTine RT900

Attachment for loosening the artificial turf. Working width 900 mm

Art.-No. 6217991



Sweeping brush

Attachment for loosening the artificial turf. Working width 1,250 mm

Art.-No. 6400284

TOOLS AND DEVICES

FOR THE INSTALLATION OF ARTIFICIAL TURF

CONTENTS

Handling	
TurfGrip	Gripping tongs for a fast and easy installation of artficial turf.
TurfFix	Turfclutch for fixing the joints of artificial turf strips while glueing.
Cutting	
LineCutter	Tool for cutting of variable width of straight lines and circular lines in artficial turf.
CircleCutter	Tool for circular cutting in artificial turf.
EC1	Electric cutting device for lines and to trim artificial turf.
Glueing	
GlueFix	Glue applicator for glue coating of seam tape for artificial turf.
LineFix	Pressure tool for a solidified connection between artificial grass and glue coated seam tape at the lines.
SeamRoller	Pressure roller for uniform pressing of artficial turf at seam tape during glueing.
FieldTester	Easy to use device for measuring hardness, stability and elasticity of sports surfaces.
TurfSet	Tool set for the installation of artificial turf.
TR5000AW	Self-propelled cart with hydraulic lifter for the transport, up- and unrolling of artificial turf.
TR5000	Cart with hydraulic lifter for the transport and rolling out of artificial turf.

Tools and devices

HANDLING



TG30, TG60

Gripping tongs for a fast and easy installation of artficial turf
TG 30 Art.-No. 8900048
TG 60 Art.-No. 8900049

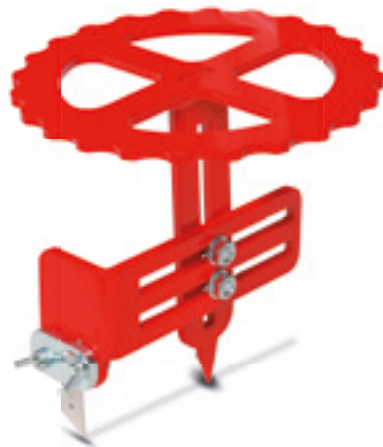


TurfFix

TurfClutch for fixing the joints of artificial turf strips while glueing
Art.-No. 8900054

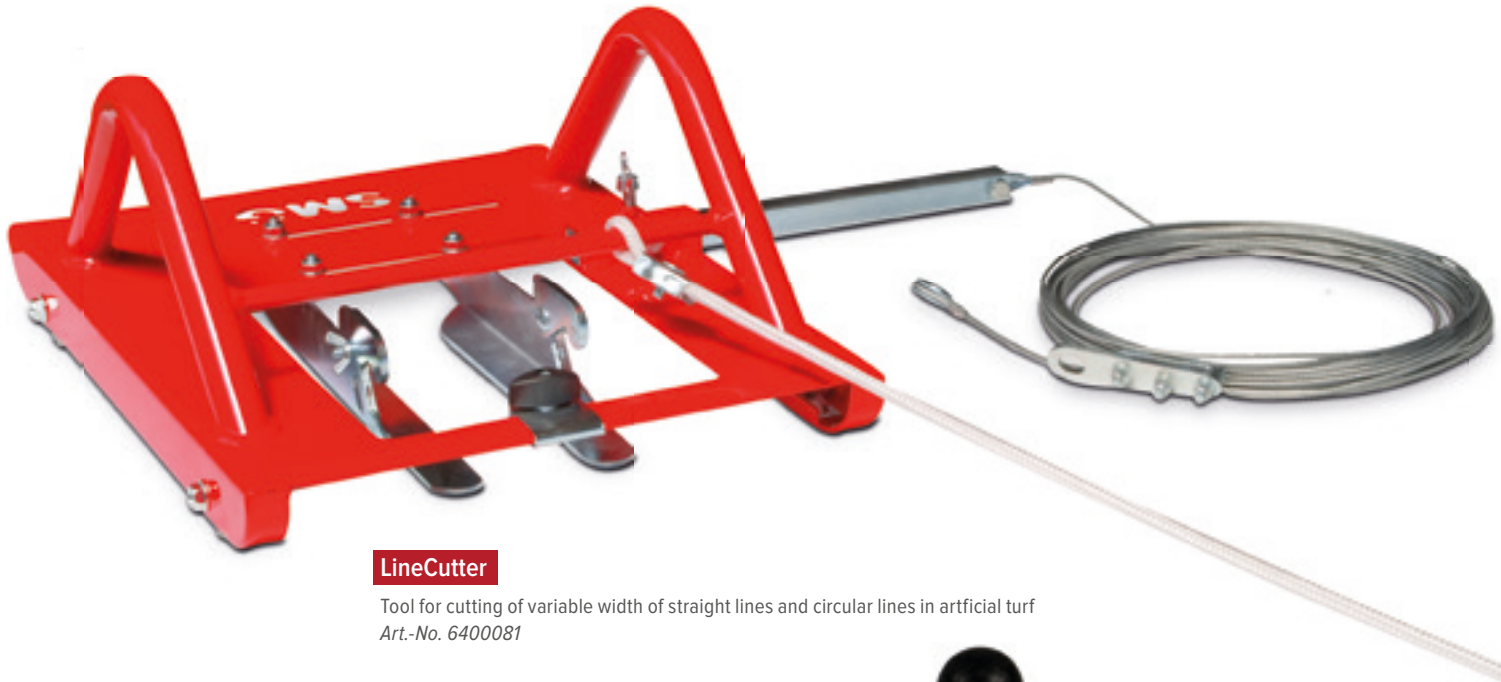
Tools and devices

CUTTING



CircleCutter CC1

Tool for circular cutting in artificial turf
Art.-No. 6400095



LineCutter

Tool for cutting of variable width of straight lines and circular lines in artificial turf
Art.-No. 6400081



CircleCutter CC2

Tool for circular cutting in artificial turf
Art.-No. 6400208



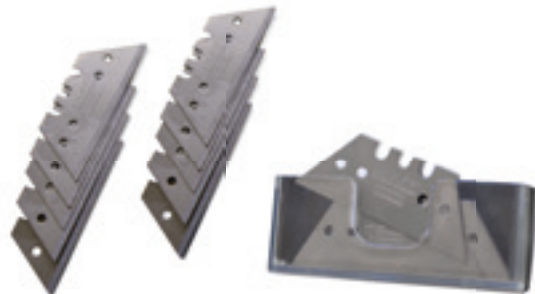
GrassCutter

For proper cutting alongside of existing track seams of artificial turf
Art.-No. 6400196



Cutter

Art.-No. 3203710



Knife blades

Knife blade-set of 10 pieces
Art.-No. 3201867



EdgeTrimmer ET1

For proper trimming of artificial grass strips; handling per stick or hand
Art.-No. 8900059



EdgeTrimmer ET2

For proper trimming of artificial grass strips; handling per stick
Art.-No. 6221115

ElectroCutter

EC1

Electric cutting device for lines and to trim artificial turf.

The electrical cutter EC1 cuts lines and radii in all popular artificial turf systems. Both cutting units are equipped with counter knives and an integrated sharpening system. Counter knife principle allows for extremely precise and fast cut, and the integrated sharpening system - for an extremely long service life of the cutting blades. When using both cutting units 5 - 20 cm lines can be produced with the speed of up to 1 m/sec. The height-adjustable floor opening prevents the cutting of the artificial turf fibre.

The optional kit CircleGuide for cutting intersecting radii may be installed, a fixable rotation plate prevents slipping. For trimming the artificial turf track, a cutting unit is swivelled upward. For cutting areas around the edges, EC1 is equipped with push button unit that guarantees a precise cut in relation to curbs and drains.

Art.-No. 6400246

Cutting capacity	up to 1 m/sec
Chassis	Aluminium construction, plastic-coated
Drive	Single phase motors, 400 W / 18 V / 4 Ah-Li Ion Duration: approx. 3 h
Weight	24 kg
Dimensions	L 1,100 x W 650 x H 900 mm

Subject to technical alterations



FLEXIBLE.
Pivoting cutting unit for the trimming of artificial turf or cutting marginal areas.



CUTTING.
Sharpening system for cutting blades.



CircleGuide CG1 (optional)
Central pivot with rollers, rotating plate, case, pivot for radii up to 9,50 metres.
Art.-No. 6211583

Tools and devices

GLUEING



GlueFix GF150

Glue applicator for glue coating of seam tape for artificial turf.
Mobile version
Art.-No. 6400153



LineFix LF1

Pressure tool for a solidified connection between artificial grass and glue coated seam tape at the lines; inserting the lines at the same time; usable also for seams
Art.-No. 6220771



GlueFix GF300W

Glue applicator for glue coating of seam tape for artificial turf.
Mobile version, range up to 300 mm
Art.-No. 6211618

Tools and devices

GLUEING



GlueFix GF300

Glue applicator for glue coating of seam tape for artificial turf.
Stationary version
Art.-No. 6400098



SeamRoller SR300

Pressure roller for uniform pressing of artificial turf at seam tape during glueing
Art.-No. 6211834



Ballramp

Foldable aluminium ball ramp to measure ball roll and ball rebound
Soccer and hockey
Art.-No. 6400306

TurfSet

Tool set for the installation of artificial turf.

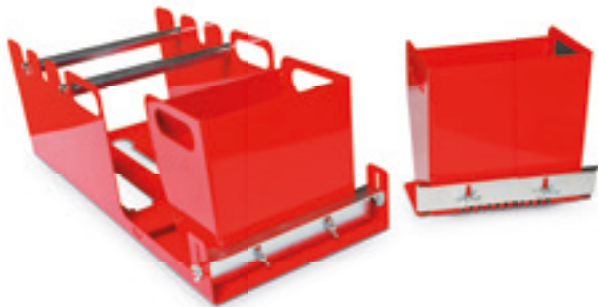
Art.-No. 6400178



LineFix LF1
Pressure tool for a solidified connection between artificial grass and glue coated seam tape at the lines; inserting the lines at the same time; usable also for seams



CircleCutter
Tool for circular cutting in artificial turf



GlueFix GF300
Glue applicator for glue coating of seam tape for artificial turf. Stationary version



LineCutter
Tool for cutting of variable width of straight lines and circular lines in artificial turf



TurfGrip (2x)
Gripping tongs for a fast and easy installation of artificial turf



GrassCutter
Proper cutting alongside of existing track seams of artificial turf



Safety Cutter (3 x)
Knife blades (50x)
5 sets of 10 pieces



EdgeTrimmer ET1
For proper trimming of artificial grass strips; handling per stick or hand



EdgeTrimmer ET2
For proper trimming of artificial grass strips; handling per stick



FloorTest FT50
Measuring tool for synthetic sports surfaces and infilled artificial turf surfaces. Range 0 – 50 mm



Measuring tape (100 m)

TurfRoller

TR5000AW

Self-propelled cart with hydraulic lifter for the transport, up- and unrolling of artificial turf

According to the established TurfRoller procedure TR5000AW takes over transport and rolling out of synthetic turf rolls. It can also roll artificial turf up – for example, for artificial turf removal. For this purpose TR5000AW is equipped with 2 strong lift cylinders on both sides and a fitted hoist with different intake tools. The winding and driving speeds are controlled separately for each trolley.

Similar to TR5000, the steering mechanism allows to manoeuvre the trolley in all directions, and thanks to that, artificial turf can be transported through narrow entrances or gates.

Art.-No. 6215939

Engine	1-cylinder petrol engine
Drive	hydraulic drive forward/reverse
Lifting height	400 mm
Lifting power	approx. 1,500 kg
Weight	585 kg
Dimensions	L 1,400 x W 1,000 x H 1,400 mm

Subject to technical alterations



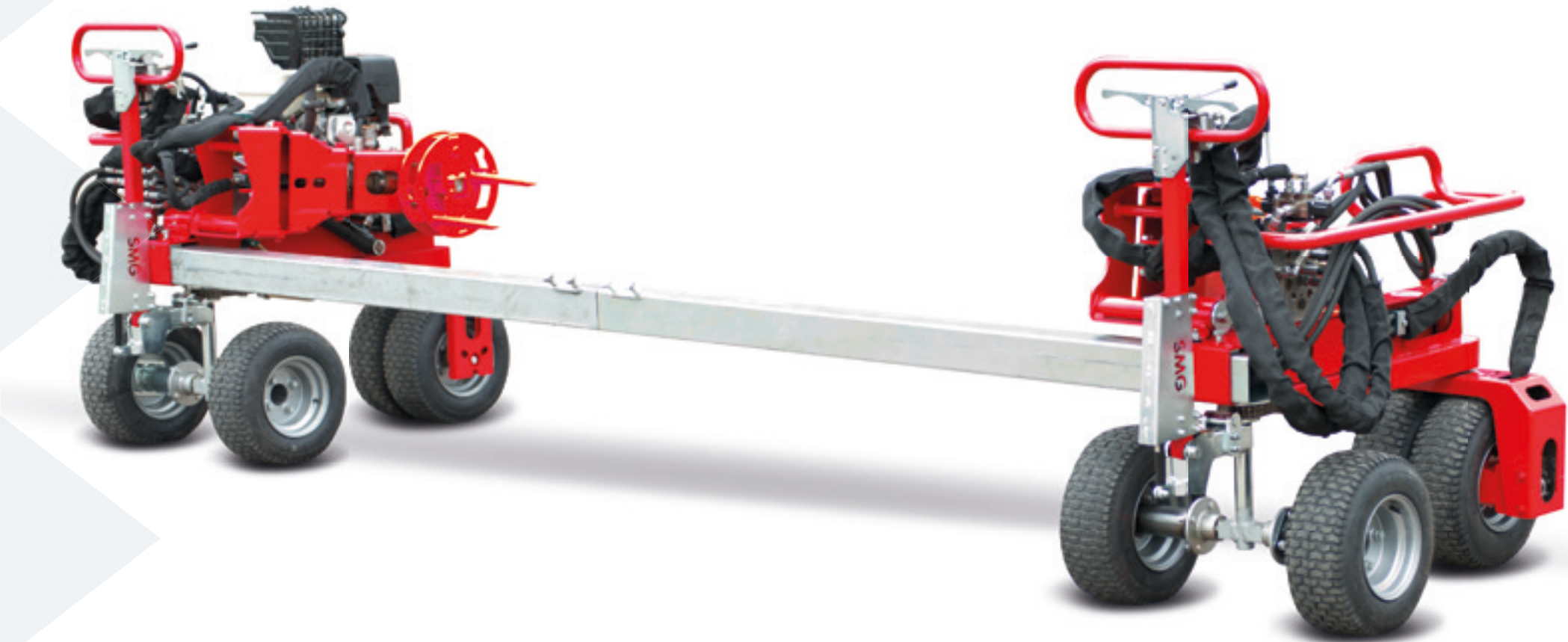
FLEXIBLE.
Different intake tools, individually at the request of the customer.



DRIVE.
Hydraulic traction drive, 120 degrees pivoting.



MOTORISATION.
4-stroke-petrol-engine with 8.6 HP.



TurfRoller

TR5000

Cart with hydraulic lifter for the transport and rolling out of artificial turf.

By using the TurfRoller TR5000 for laying of artificial turf the user will benefit from a considerably reduced work-load because this device makes the transport and laying of turf rolls very easy.

Traditionally, artificial turf track installation is characterized as labour-intensive, and energy- and time-consuming. In contrast, the reasonable construction of the TurfRoller TR5000 allows a precise positioning and rolling out of a turf roll making a subsequent adjustment nearly unnecessary.

The TurfRoller TR5000 is able to easily lay artificial turf rolls of up to 5 m wide. TurfRoller TR5000 consists of two carts. Each cart is equipped with two steerable double pneumatic tires being steered by a drawbar.

The minimal surface pressure on the subbase is guaranteed and thus the transport on unbounded elastic layers is an effortless business.

With this clever steering mechanism, TR5000 is variable and precise to manoeuvre in all directions.

Art.-No. 6400214

Lifting height	400 mm
Lifting power	approx. 1,500 kg
Weight	370 kg
Dimensions	L 1,250 x W 850 x H 1,250 mm

Subject to technical alterations



WORKING WIDTH.
Artificial turf roll widths from 1.0 to 5.0 m and a weight up to max. 1,500 kg are possible.



Variably adjustable for easy maneuvering and precise rolling of the turf.





passion for sports grounds

SMG Sportplatzmaschinenbau GmbH

Robert-Bosch-Straße 3

DE - 89269 Vöhringen (Germany)

Tel + 49 (0) 73 06 / 96 65 - 0

Fax + 49 (0) 73 06 / 96 65 - 50

info@smg-gmbh.de

www.smg-gmbh.de

Owners:

Markus Owegeser, Tobias Owegeser, Daniel Owegeser